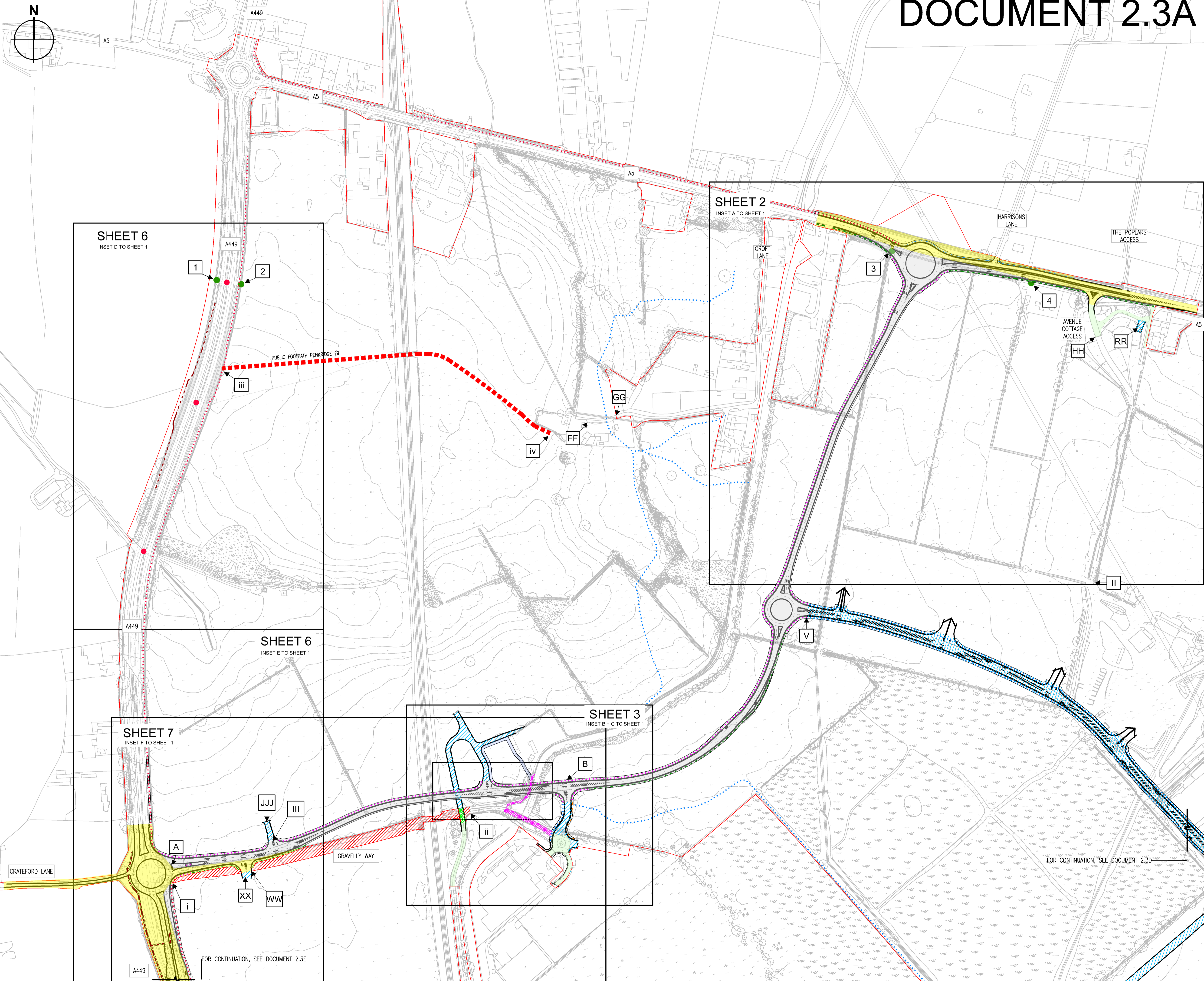


DOCUMENT 2.3A

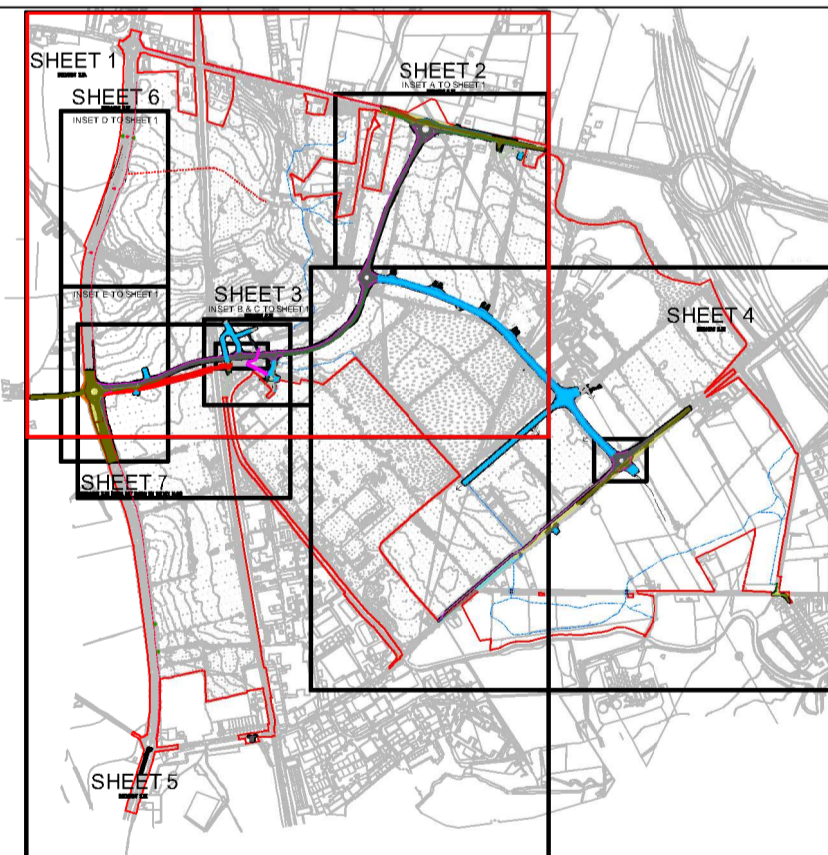


- KEY**
- ORDER LIMITS
 - NEW ALL PURPOSE HIGHWAY CREATED
 - NEW PRIVATE ROAD
 - EXISTING ALL PURPOSE HIGHWAY TO BE STOPPED UP
 - EXISTING ALL PURPOSE HIGHWAY TO BE STOPPED UP AND BECOME PRIVATE ROAD
 - EXISTING ADOPTED HIGHWAY (TO REMAIN AS ADOPTED HIGHWAY) TO WHICH NEW ACCESS ARE CREATED
 - EXISTING PRIVATE ROAD (TO REMAIN AS PRIVATE ROAD)
 - EXISTING PRIVATE ROAD TO BE CLOSED
 - EXISTING PRIVATE ROAD TO BE CLOSED AND BECOME PERMISSIVE ROUTE FOR PEDESTRIANS & CYCLISTS
 - NEW CYCLE TRACK/FOOTPATH
 - NEW PERMISSIVE ROUTE FOR PEDESTRIANS AND CYCLISTS
 - IMPROVEMENT TO EXISTING CYCLEWAY / FOOTWAY TRACK
 - NEW CYCLEWAY / FOOTWAY
 - NEW PUBLIC FOOTWAY
 - - - - RELOCATED PUBLIC CYCLEWAY / FOOTWAY
 - - - - IMPROVEMENT TO EXISTING PUBLIC FOOTWAY
 - - - - NEW PRIVATE FOOTPATH
 - - - - EXISTING PUBLIC RIGHT OF WAY TO BE STOPPED UP
 - PEDESTRIAN / CYCLE CROSSING POINT (SUBJECT TO FINAL POSITIONING OF PERMISSIVE PATHS)
 - ➔ INDICATIVE DEVELOPMENT PLOT ENTRANCE
 - BLOCKED ACCESS THROUGH CENTRAL RESERVATION (NEW PERMANENT TRAFFIC REGULATION ORDER)
 - ACCESS CLOSED
 - 4 REFERENCE LABEL

NOTE: LIMITS OF DEVIATION SHOWN ON THE WORKS PLANS (DOCUMENT SERIES 2.2) AND SET OUT IN ARTICLE 4 OF THE DEVELOPMENT CONSENT ORDER

CHANGES MADE TO DOCUMENT 2.3A SINCE DCO SUBMISSION:

- MAY 2019 -
- INSET F (SHEET 7) HAS BEEN CREATED TO SHOW THE CLOSURE OF THE BINNY OPEN TO ALL TRAFFIC (BOTH ON GRAVELLY WAY BUT THE DETAIL IS NOT SHOWN ON THIS SHEET 1 (PLEASE SEE DOCUMENT 2.3C)).
- PEDESTRIAN CROSSING ON THE A449 SIGNALISED AND RELOCATED FURTHER SOUTH OF THE ROUNDABOUT IN RESPONSE TO COMMENTS FROM HIGHWAYS ENGLAND IN THE RSA.
- PEDESTRIAN CROSSING ON GRAVELLY WAY MOVED EAST, STAGGERED AND SIGNALISED IN RESPONSE TO COMMENTS FROM HIGHWAYS ENGLAND IN THE RSA AND AS A RESULT, THE ACCESS TO THE RAIL TERMINAL HAS BEEN MOVED EAST. THE TOTAL WIDTH OF THE GRAVELLY WAY FORM HAS BEEN INCREASED TO PROVIDE SUFFICIENT WIDTH FOR THE CROSSING AND VEHICLE MOVEMENTS.
- FOOTWAY WEST OF THE A449 HAS BEEN RELOCATED AND RECLASSIFIED AS CYCLEWAY / FOOTWAY IN RESPONSE TO COMMENTS FROM HIGHWAYS ENGLAND IN THE RSA.
- ADDITIONAL VERGE ON THE EASTERN SIDE OF THE A449 HAS BEEN ALLOCATED TO ENSURE VISIBILITY TO THE PEDESTRIAN CROSSINGS IS PROTECTED.
- JULY 2019 -
- LABELS REMOVED TO REFLECT SOC REQUEST THAT CERTAIN FOOTWAYS / CYCLEWAYS ARE NOT IDENTIFIED AS NEW PUBLIC RIGHTS OF WAY.
- PEDESTRIAN CROSSING OF WESTBOUND GRAVELLY WAY POSITIONED FURTHER WEST IN RESPONSE TO HIGHWAYS ENGLAND COMMENTS AND RSA.
- CROSSING AREA ON CENTRAL ISLAND OF GRAVELLY WAY REVISED.
- AUGUST 2019 -
- AMENDMENT TO CROSSING ON LINK ROAD IN RESPONSE TO COMMENTS FROM RSA AND GG104 SAFETY RISK ASSESSMENT.



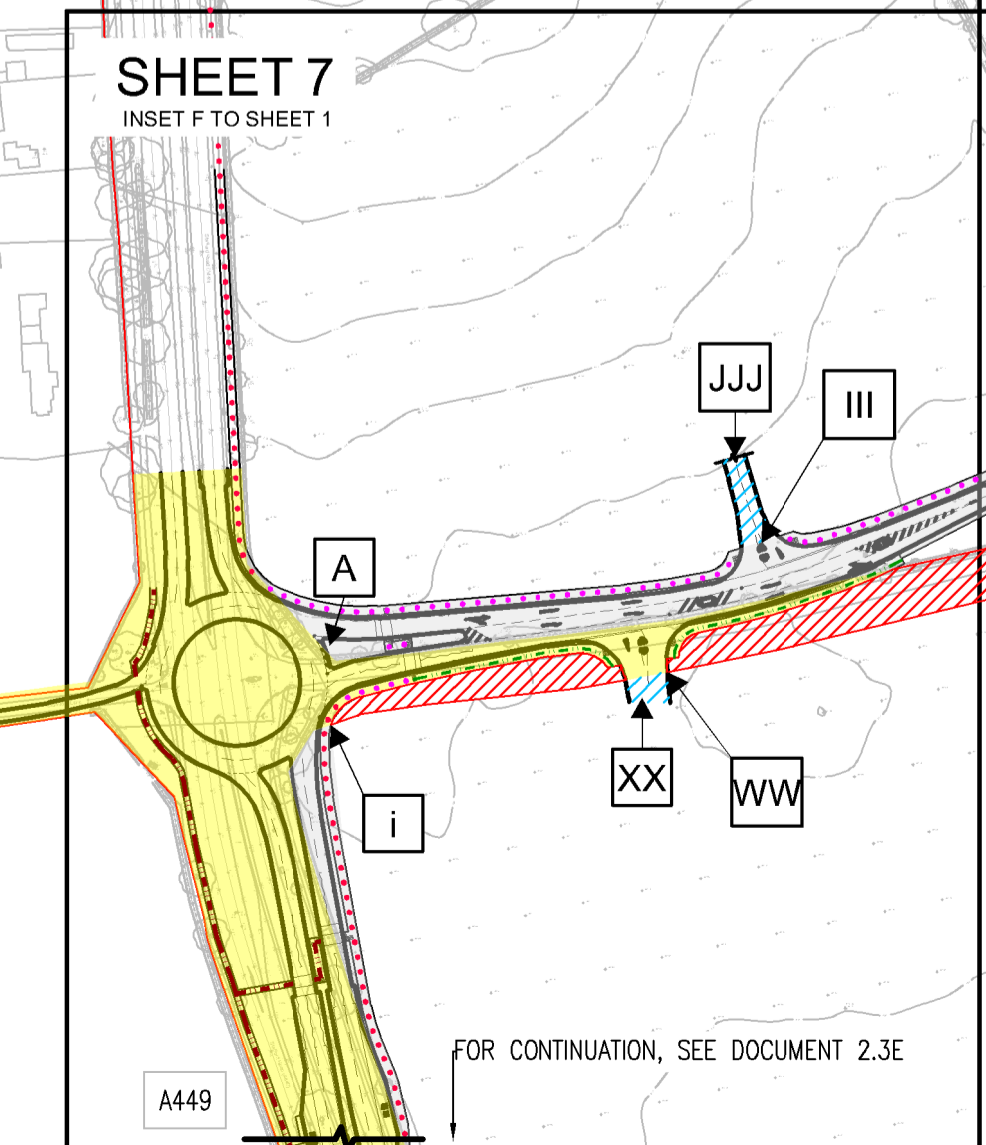
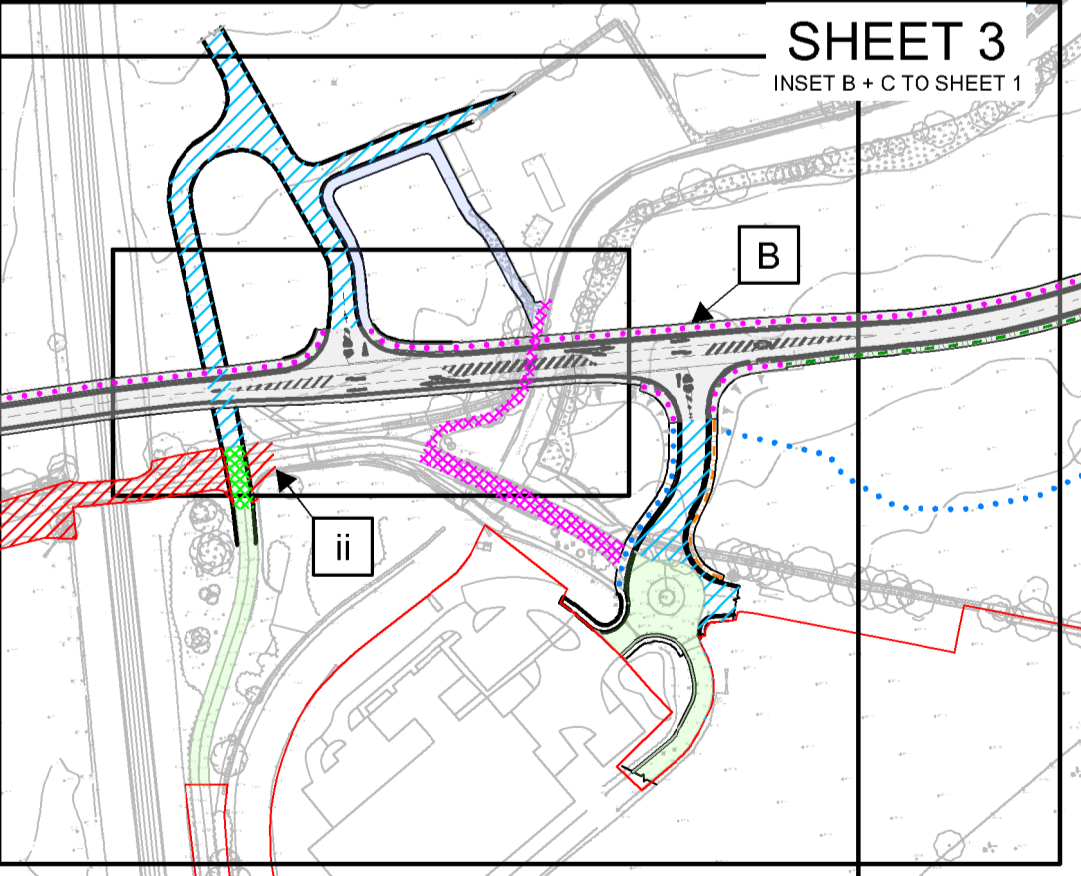
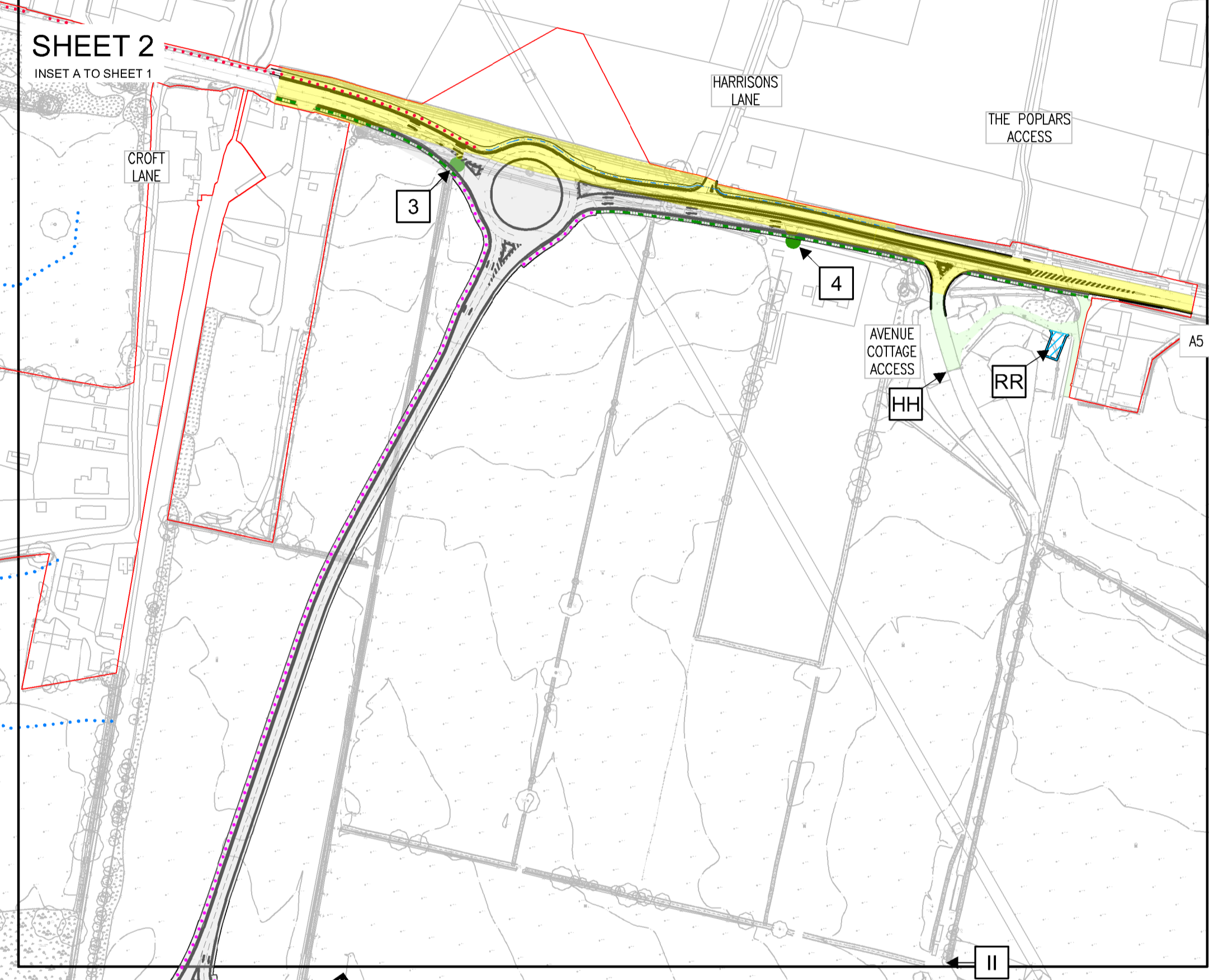
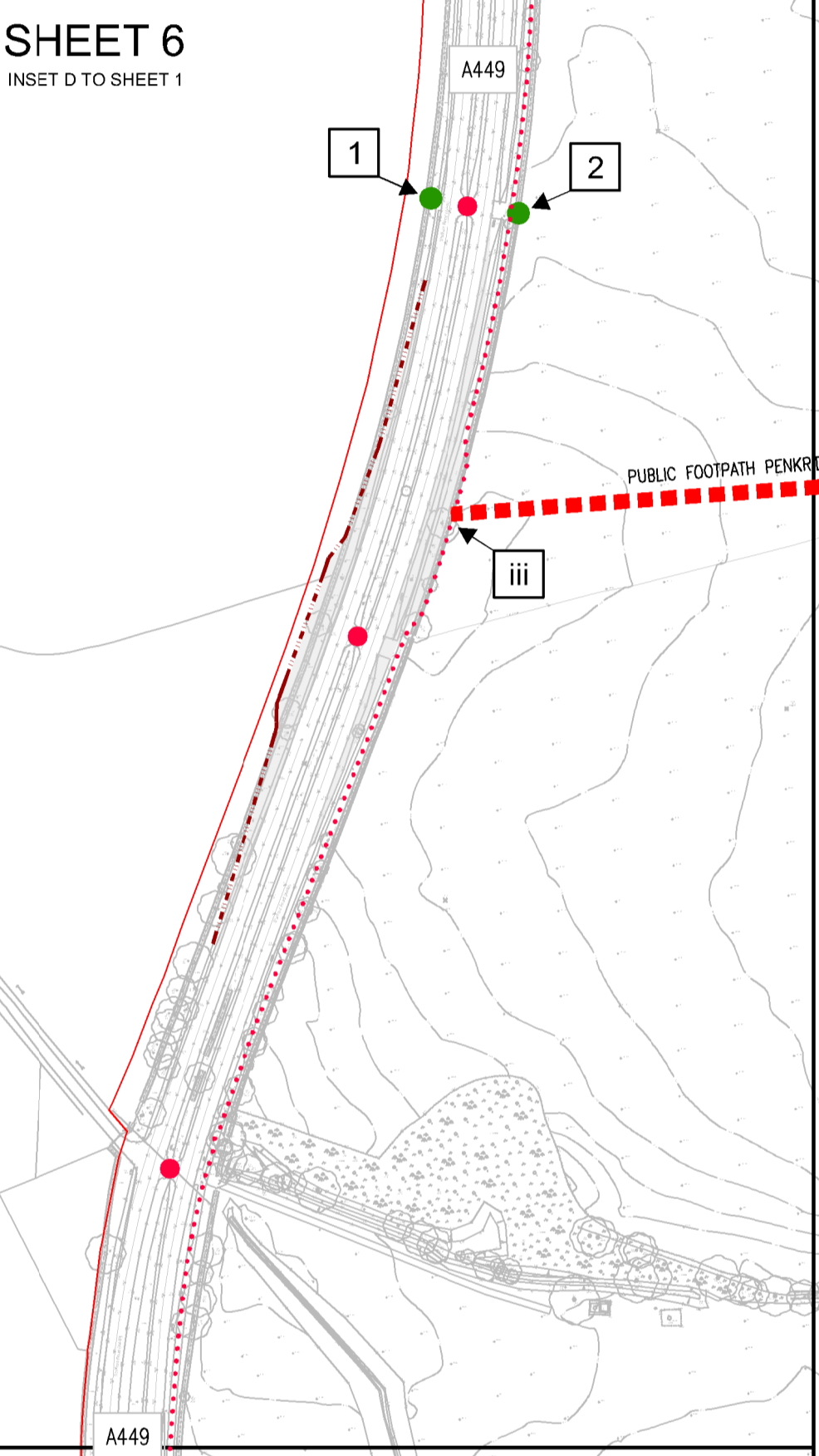
Project
THE WEST MIDLANDS RAIL FREIGHT INTERCHANGE ORDER 201X

Drawing Status
SUBMISSION

Drawing Title
ACCESS AND RIGHTS OF WAY PLAN SHEET 1

Drawing Size A1

Regulation 5 (2) (k)	Document 2.3A
Drawn NW Date: JUNE 2018 Scale 1: 2500	Reviewed IF Rev. H



FOR CONTINUATION, SEE DOCUMENT 2.3E

FOR CONTINUATION, SEE DOCUMENT 2.3D